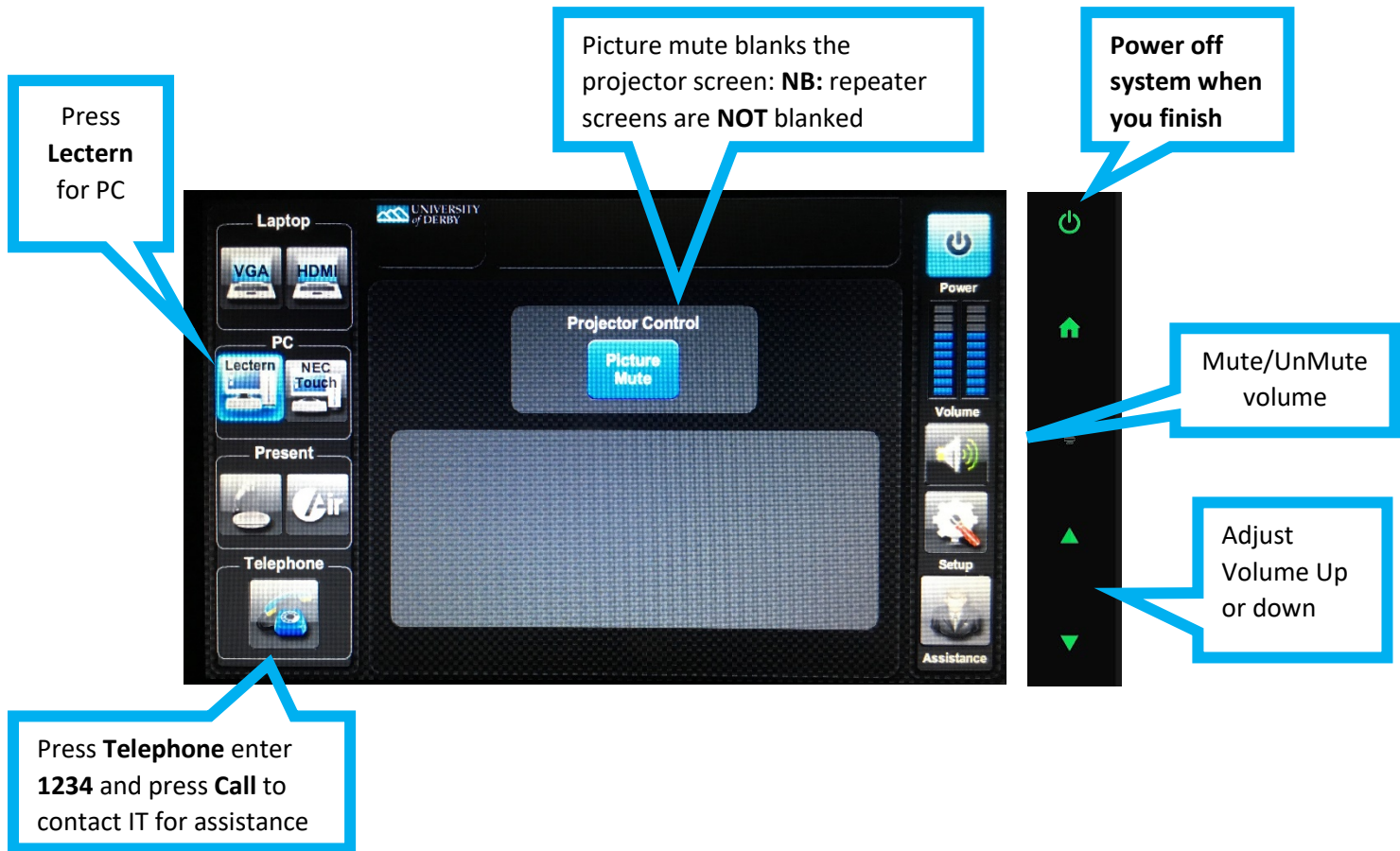



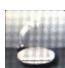
T201/T204 Quick Start Guide

1. Press the Touch Panel to Start




2. Press the Source button you require to start up the projector and monitor:

 **Lectern:** Select Lectern to view PC and log in to your University account. The monitor on the lectern is a touchscreen. **DVDs** can be played through the PC (Use VLC player software)

 **Visualiser:** Select to use the Document Camera/Visualiser. Use the onscreen controls to adjust

 **Laptops/ Mobile Devices:** Connect your device to the lectern HDMI or VGA input, then select **HDMI** or select **VGA** if you have connected to the **VGA** input

 **AirMedia*:** Select to send wireless content from your device to the projector(s). Follow the onscreen instructions that appear on the monitor *only available on University Managed staff devices that are connected to the UniStaff wifi

Panopto lecture capture: This room is setup up with lectern microphones and cameras for lecture capture.

Radio microphones must be booked in advance

Any questions, please call the
IT Service Centre on **01332 591234**