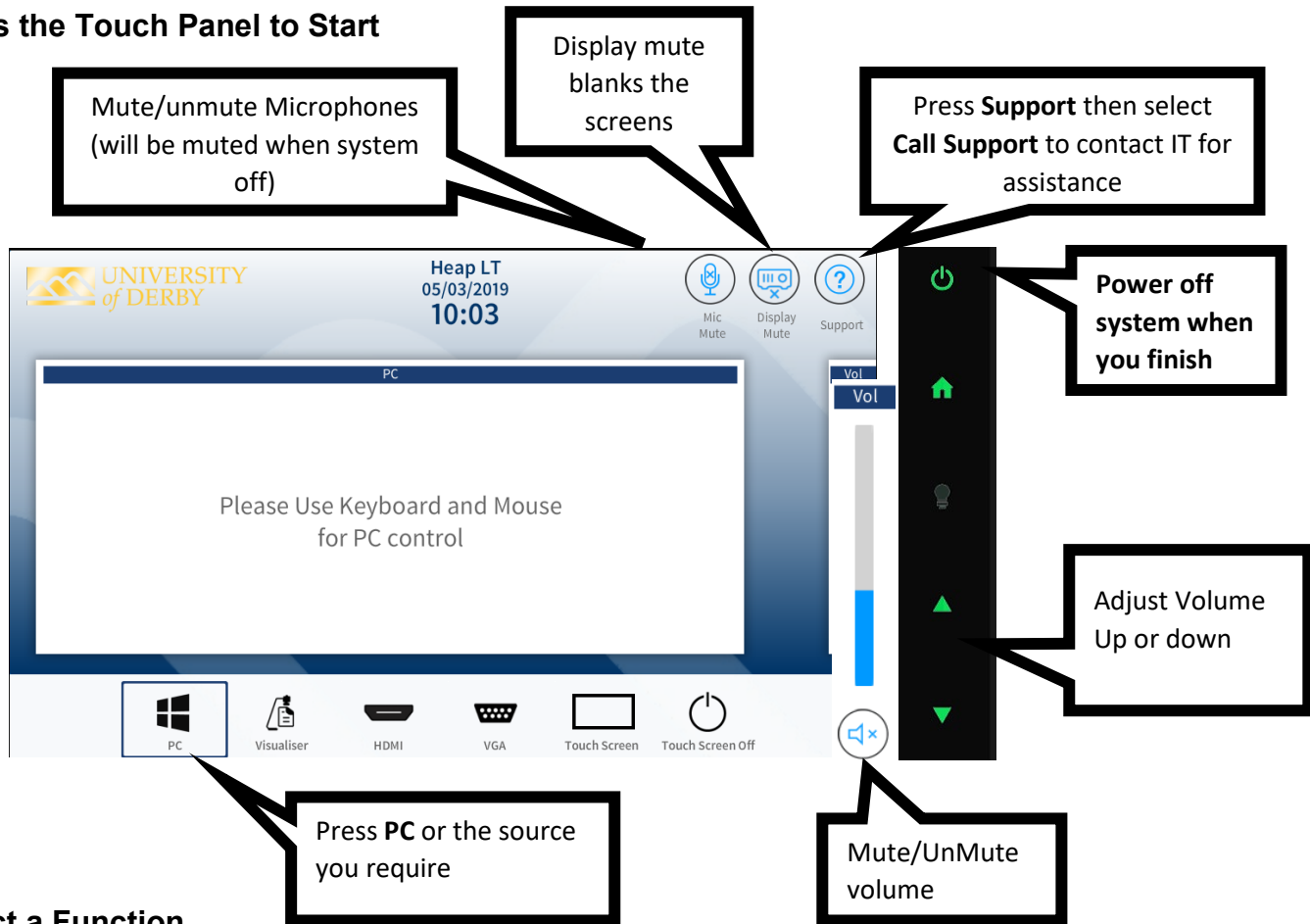


1. Press the Touch Panel to Start



2. Select a Function



Lectern: Select Lectern to view PC and log in to your University account. The monitor on the lectern is a touchscreen. **DVDs** can be played through the PC (Use VLC player software) . Please log out when you finish



Visualiser: Select to use the Document Camera/Visualiser. Use the onscreen controls to adjust



Laptops/ Mobile Devices: Connect your device to the lectern HDMI or VGA input, then select **HDMI** or select **VGA** if you have connected to the **VGA** input



AirMedia*: Select to send wireless content from your device to the projector(s). Follow the onscreen instructions that appear on the monitor *only available on University Managed staff devices that are connected to the UniStaff wifi



Touch screen: There is a separate PC connected to the 70" touch screen on the teaching wall, log on by touching the 70" screen to select the onscreen keyboard

Panopto lecture capture: This room is setup up with lectern microphones and cameras for lecture capture.

Radio microphones must be booked in advance

Any questions, please call the
IT Service Centre on **01332 591234**